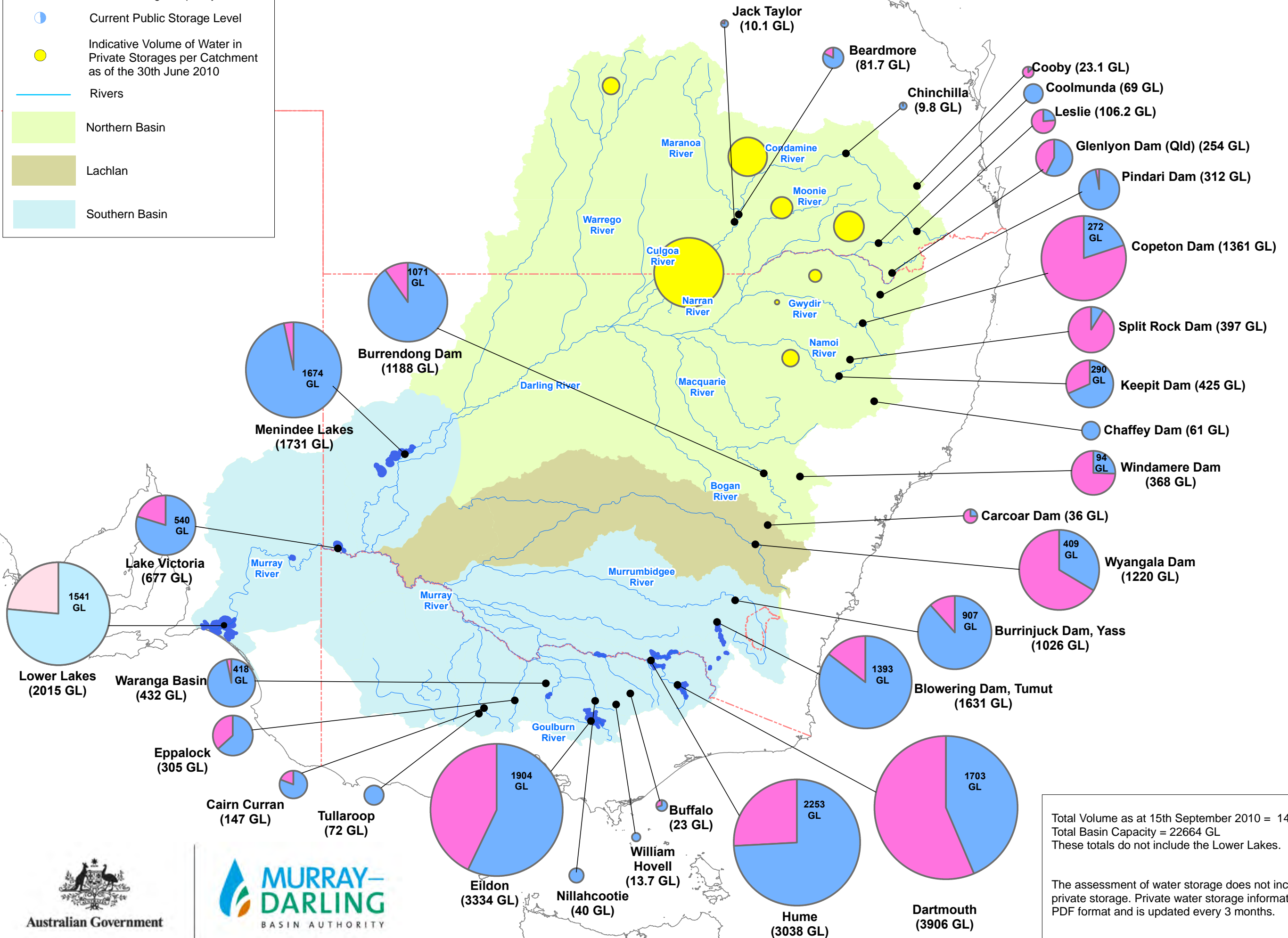
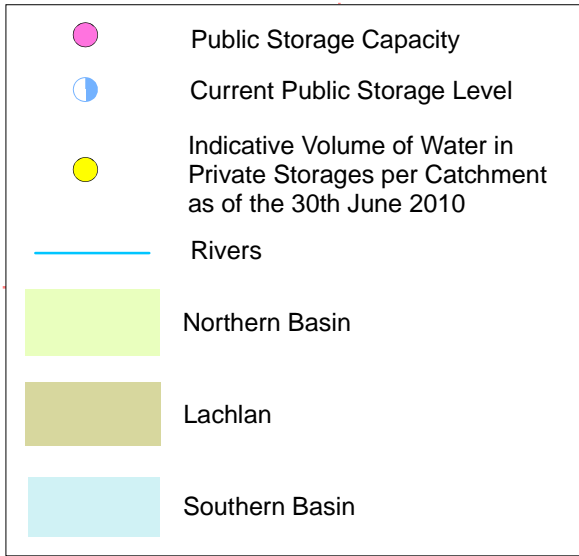


# Murray-Darling Basin Government Irrigation Storages – 15th September 2010



Total Volume as at 15th September 2010 = 14123 GL  
 Total Basin Capacity = 22664 GL  
 These totals do not include the Lower Lakes.

The assessment of water storage does not include water in private storage. Private water storage information is available in PDF format and is updated every 3 months.

