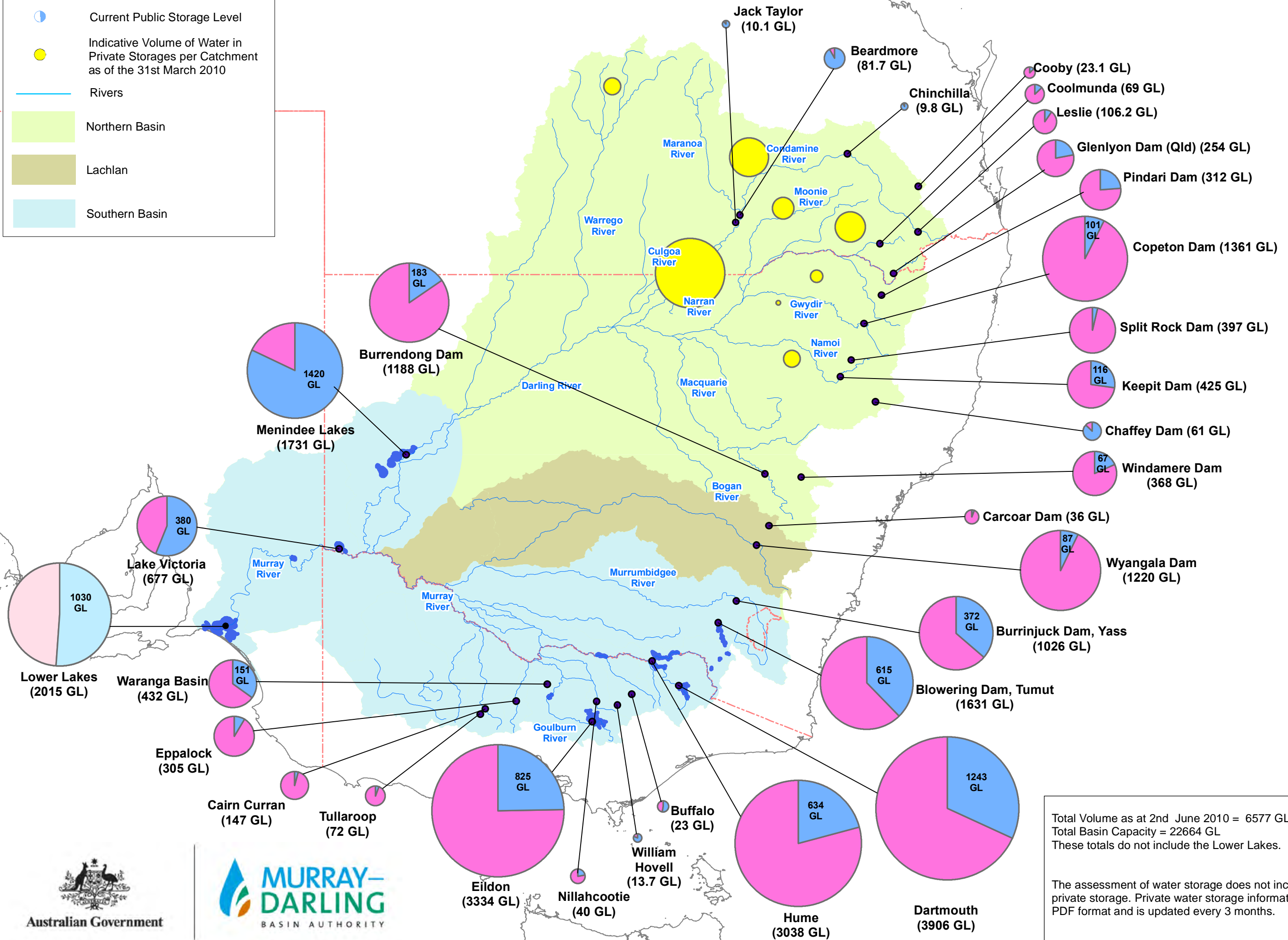
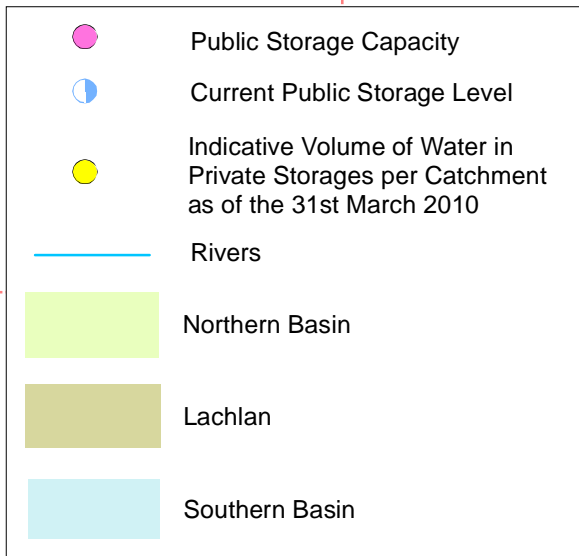


Murray-Darling Basin Government Irrigation Storages – 2nd June 2010



Total Volume as at 2nd June 2010 = 6577 GL
 Total Basin Capacity = 22664 GL
 These totals do not include the Lower Lakes.

The assessment of water storage does not include water in private storage. Private water storage information is available in PDF format and is updated every 3 months.

