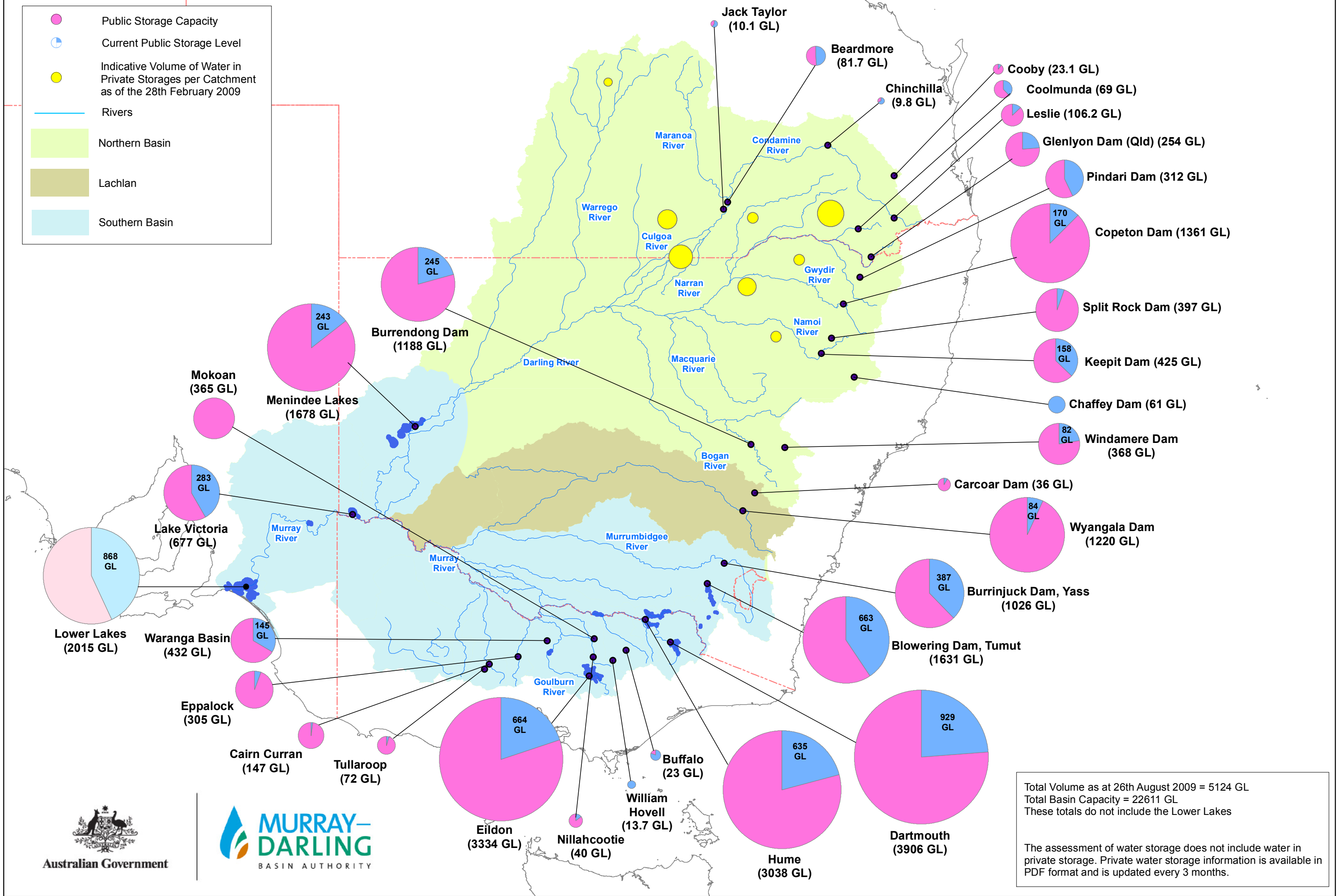
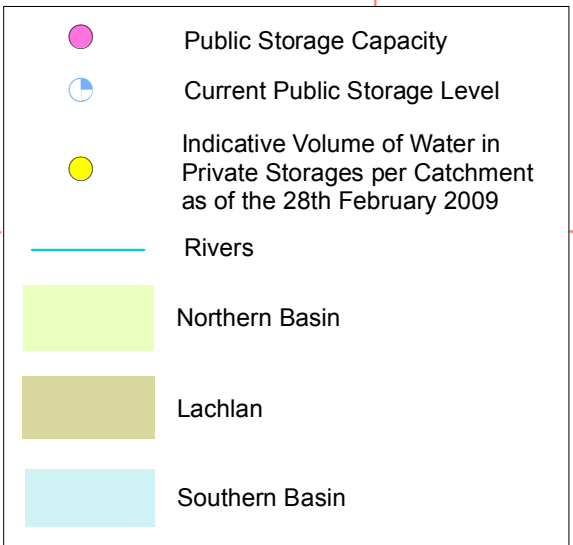


Murray-Darling Basin Government Irrigation Storages – 26th August 2009



Total Volume as at 26th August 2009 = 5124 GL
 Total Basin Capacity = 22611 GL
 These totals do not include the Lower Lakes

The assessment of water storage does not include water in private storage. Private water storage information is available in PDF format and is updated every 3 months.

