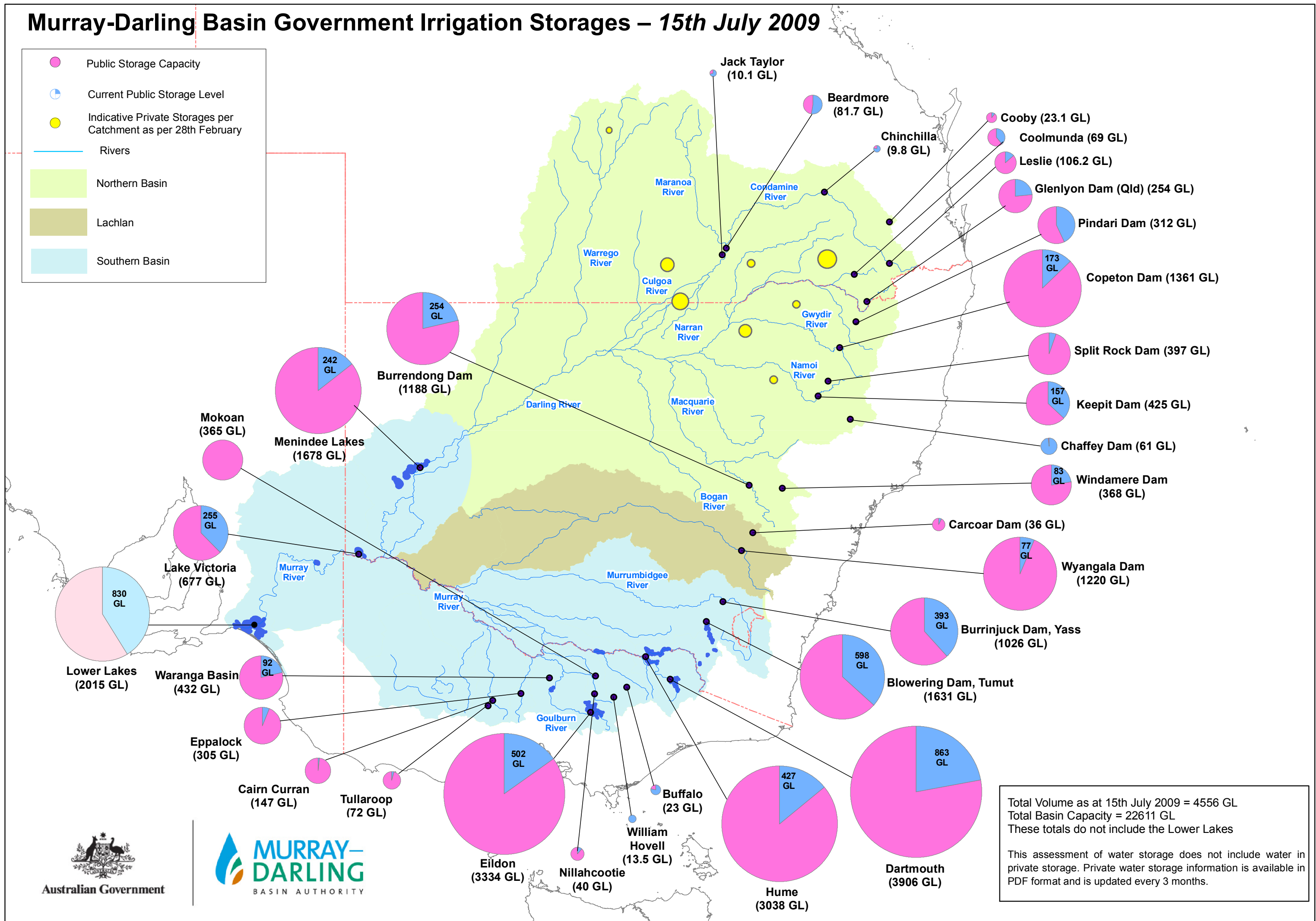
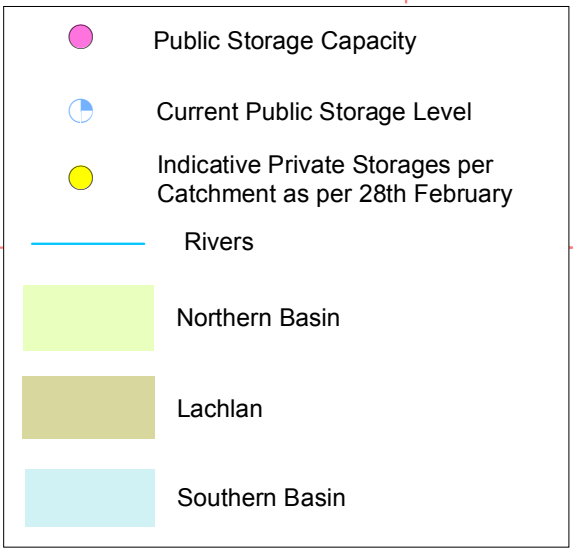


Murray-Darling Basin Government Irrigation Storages – 15th July 2009



| Storage Name | Capacity (GL) | Current Level (GL) |
|----------------------|---------------|--------------------|
| Jack Taylor | 10.1 | 10.1 |
| Beardmore | 81.7 | 81.7 |
| Chinchilla | 9.8 | 9.8 |
| Cooby | 23.1 | 23.1 |
| Coolmunda | 69 | 69 |
| Leslie | 106.2 | 106.2 |
| Glenlyon Dam (Qld) | 254 | 254 |
| Pindari Dam | 312 | 312 |
| Copeton Dam | 1361 | 173 |
| Split Rock Dam | 397 | 397 |
| Keepit Dam | 425 | 157 |
| Chaffey Dam | 61 | 61 |
| Windamere Dam | 368 | 83 |
| Carcoar Dam | 36 | 36 |
| Wyangala Dam | 1220 | 77 |
| Burrinjuck Dam, Yass | 1026 | 393 |
| Blowering Dam, Tumut | 1631 | 598 |
| Dartmouth | 3906 | 863 |
| Hume | 3038 | 427 |
| Buffalo | 23 | 23 |
| William Hovell | 13.5 | 13.5 |
| Nillahcootie | 40 | 40 |
| Eildon | 3334 | 502 |
| Tullaroop | 72 | 72 |
| Cairn Curran | 147 | 147 |
| Eppalock | 305 | 305 |
| Waranga Basin | 432 | 92 |
| Lower Lakes | 2015 | 830 |
| Lake Victoria | 677 | 255 |
| Mokoan | 365 | 365 |
| Menindee Lakes | 1678 | 242 |
| Burrundong Dam | 1188 | 254 |
| Murray River | 2015 | 830 |
| Murrumbidgee River | 1220 | 77 |
| Goulburn River | 1631 | 598 |

Total Volume as at 15th July 2009 = 4556 GL
 Total Basin Capacity = 22611 GL
 These totals do not include the Lower Lakes

This assessment of water storage does not include water in private storage. Private water storage information is available in PDF format and is updated every 3 months.

