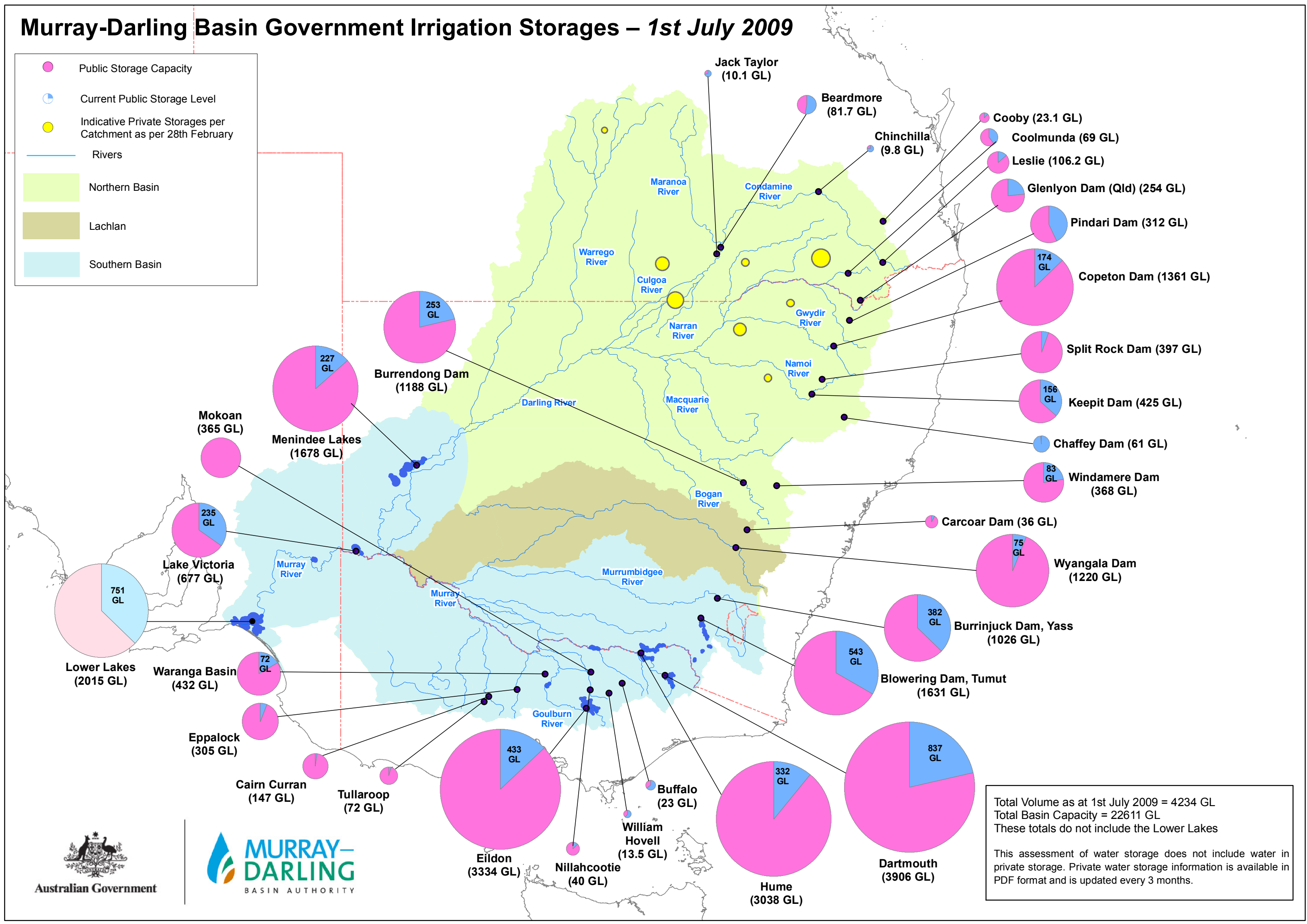
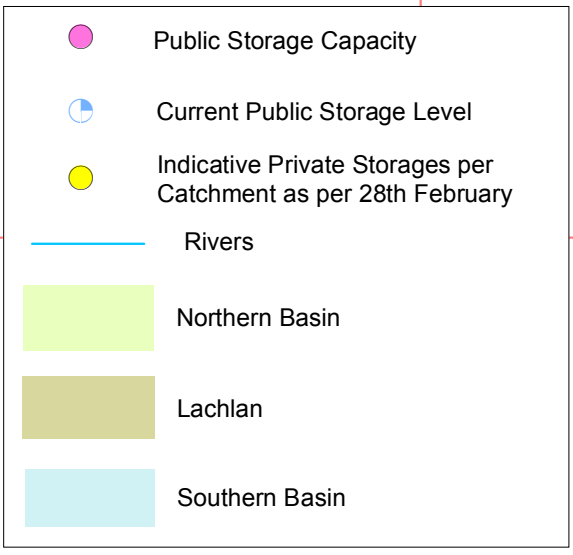


Murray-Darling Basin Government Irrigation Storages – 1st July 2009



Storage Name	Basin	Public Storage Capacity (GL)	Current Public Storage Level (GL)	Indicative Private Storage (GL)
Jack Taylor	Northern	10.1	0	0
Beardmore	Northern	81.7	0	0
Chinchilla	Northern	9.8	0	0
Cooby	Northern	23.1	0	0
Coolmunda	Northern	69	0	0
Leslie	Northern	106.2	0	0
Glenlyon Dam (Qld)	Northern	254	0	0
Pindari Dam	Northern	312	0	0
Copeton Dam	Northern	1361	174	0
Split Rock Dam	Northern	397	0	0
Keepit Dam	Northern	425	156	0
Chaffey Dam	Northern	61	0	0
Windamere Dam	Northern	368	83	0
Carcoar Dam	Northern	36	0	0
Wyangala Dam	Northern	1220	75	0
Burrinjuck Dam, Yass	Northern	1026	382	0
Blowering Dam, Tumut	Northern	1631	543	0
Dartmouth	Northern	3906	837	0
Hume	Northern	3038	332	0
William Hovell	Northern	13.5	0	0
Buffalo	Northern	23	0	0
Nillahcootie	Northern	40	0	0
Eildon	Northern	3334	433	0
Tullaroop	Northern	72	0	0
Cairn Curran	Northern	147	0	0
Eppalock	Northern	305	0	0
Waranga Basin	Northern	432	72	0
Lower Lakes	Northern	2015	751	0
Lake Victoria	Northern	677	235	0
Mokoan	Northern	365	0	0
Burrendong Dam	Northern	1188	253	0
Menindee Lakes	Northern	1678	227	0
Murray River	Northern	0	0	0
Murrumbidgee River	Northern	0	0	0
Goulburn River	Northern	0	0	0
Warrego River	Northern	0	0	0
Maranoa River	Northern	0	0	0
Condamine River	Northern	0	0	0
Culgoa River	Northern	0	0	0
Narran River	Northern	0	0	0
Gwydir River	Northern	0	0	0
Namoi River	Northern	0	0	0
Darling River	Northern	0	0	0
Macquarie River	Northern	0	0	0
Bogan River	Northern	0	0	0
Murray River	Southern	0	0	0
Murrumbidgee River	Southern	0	0	0
Goulburn River	Southern	0	0	0

Total Volume as at 1st July 2009 = 4234 GL
 Total Basin Capacity = 22611 GL
 These totals do not include the Lower Lakes

This assessment of water storage does not include water in private storage. Private water storage information is available in PDF format and is updated every 3 months.

