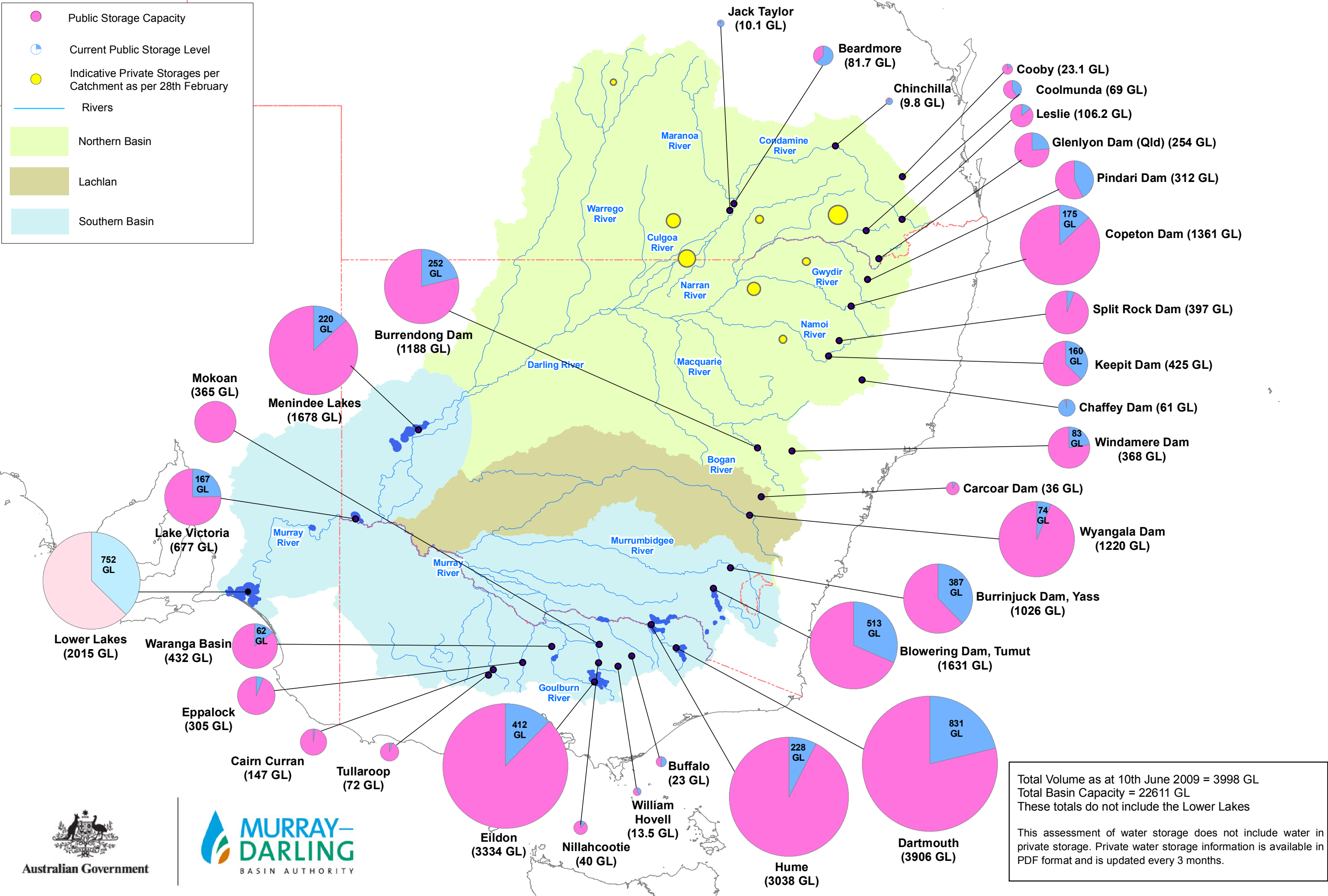
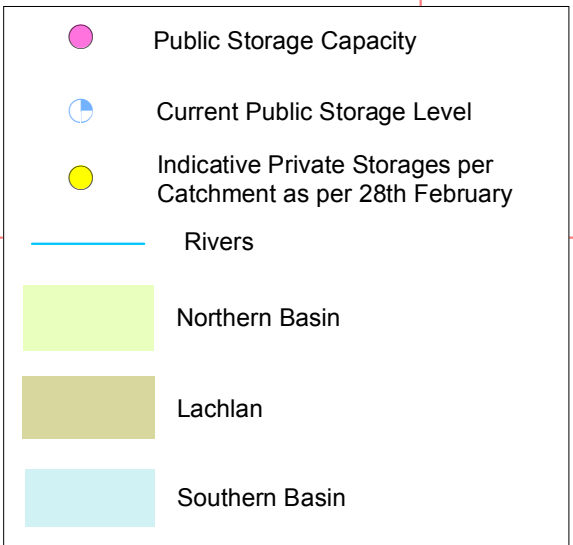


Murray-Darling Basin Government Irrigation Storages – 10th June 2009



Total Volume as at 10th June 2009 = 3998 GL
 Total Basin Capacity = 22611 GL
 These totals do not include the Lower Lakes

This assessment of water storage does not include water in private storage. Private water storage information is available in PDF format and is updated every 3 months.

