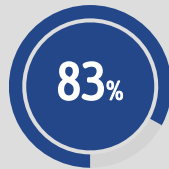
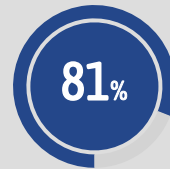


83% Whole of Basin
18,556 of 22,258 GL



83% Southern Basin
13,538 of 16,296 GL



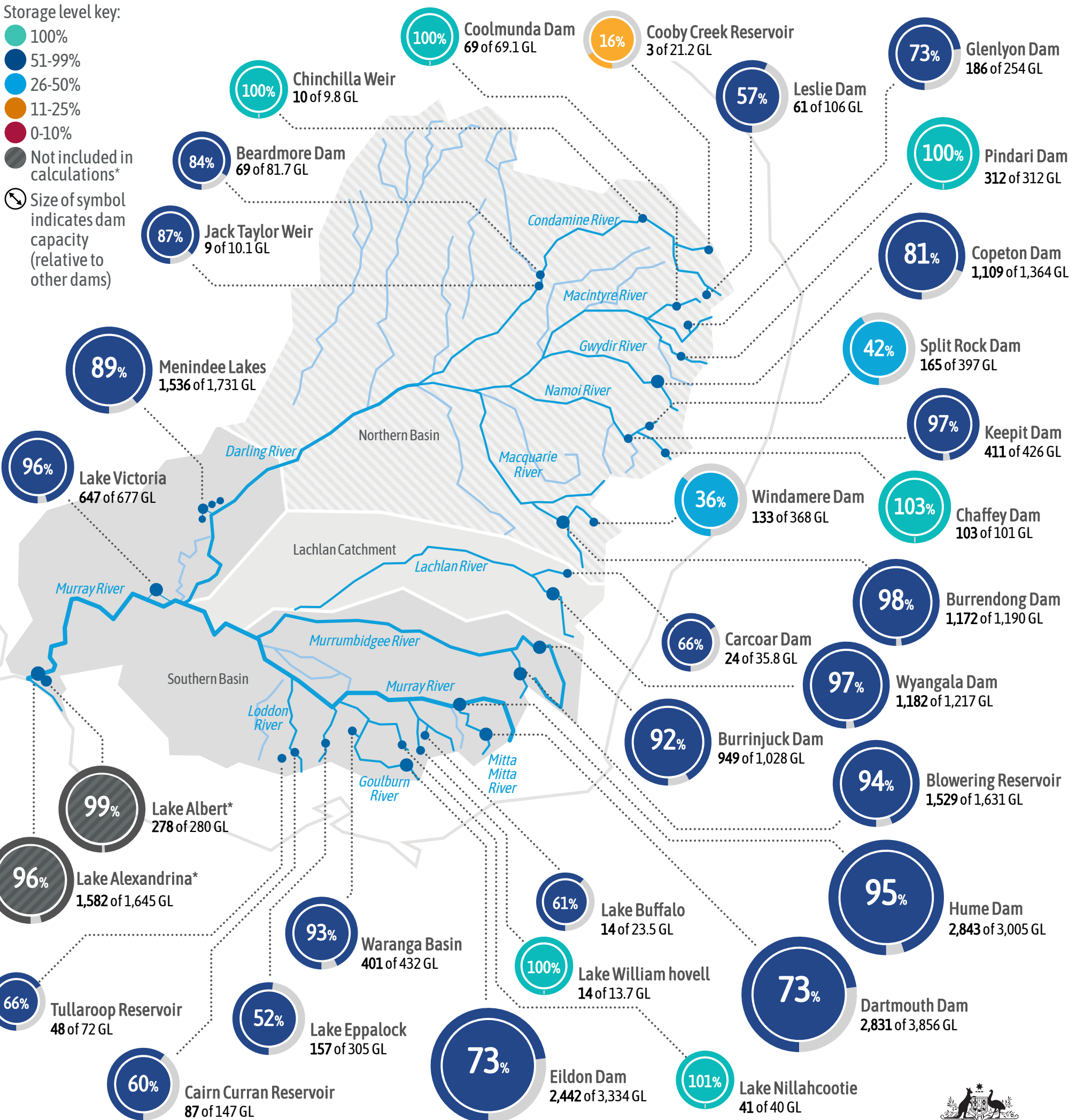
81% Northern Basin
3,812 of 4,710 GL



96% Lachlan
1,205 of 1253 GL

Storage level key:

- 100%
- 51-99%
- 26-50%
- 11-25%
- 0-10%
- Not included in calculations*
- Size of symbol indicates dam capacity (relative to other dams)



With the exception of the Commonwealth Coat of Arms, the MDBA logo, and trademarks, this publication is provided under a Creative Commons Attribution 4.0 licence. (<https://creativecommons.org/licenses/by/4.0>) © Murray–Darling Basin Authority 2019

The assessment of water in storage does not include water in private storage. If the current storage volume figure is higher than the total storage capacity, this is due to surcharge levels. The total storage capacity published for the Lower Lakes (Alexandrina and Albert) is an approximate value.

* Lower Lakes storage volume is not included in southern Basin calculations. Visit mdba.gov.au/managing-water/water-storage for more information.



Australian Government

