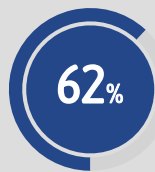
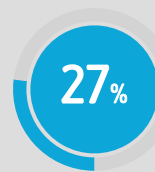




55% Whole of Basin
12,174 of 22,258 GL



62% Southern Basin
10,152 of 16,296 GL



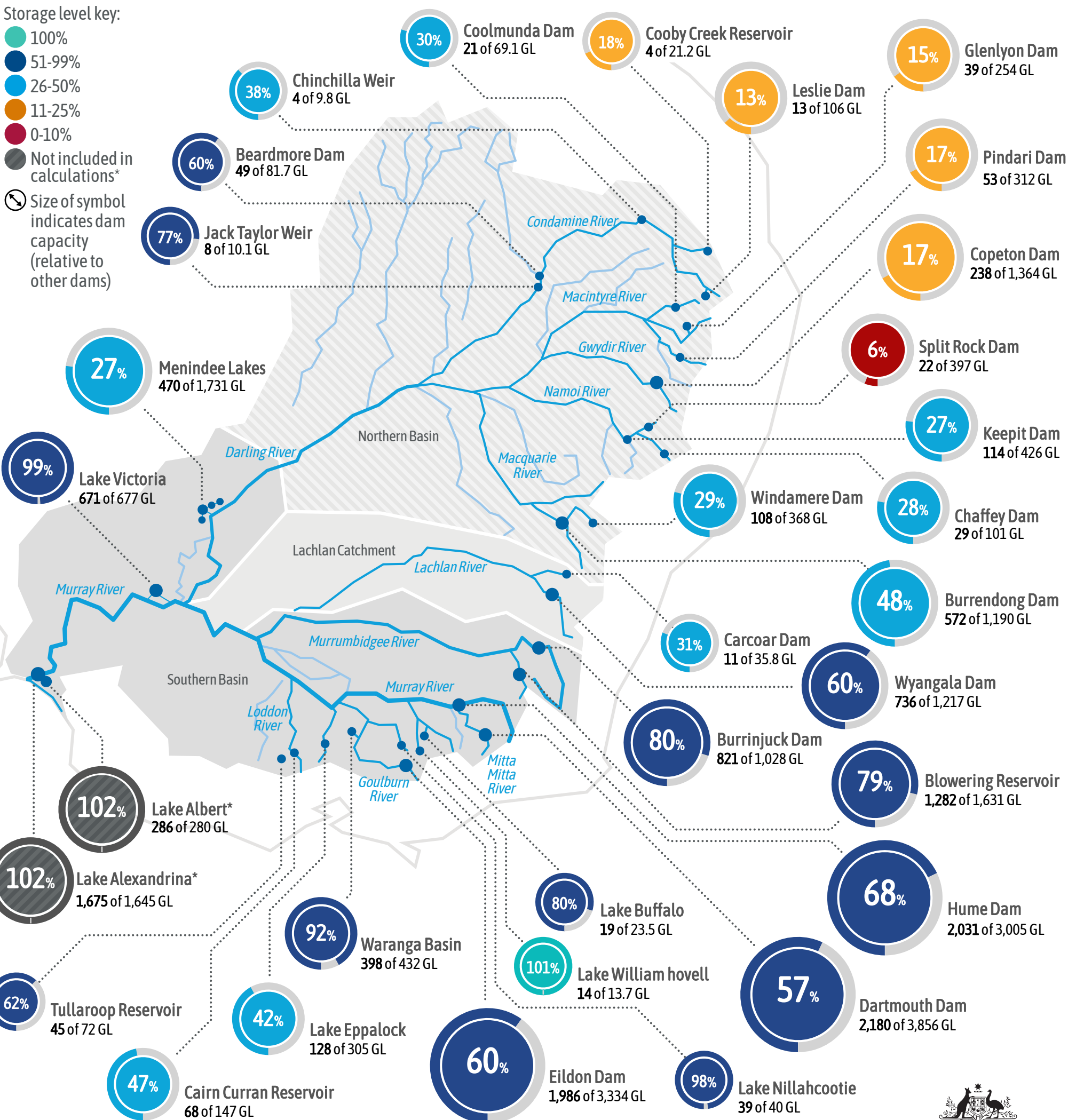
27% Northern Basin
1,274 of 4,710 GL



60% Lachlan
747 of 1253 GL

Storage level key:

- 100%
- 51-99%
- 26-50%
- 11-25%
- 0-10%
- Not included in calculations*
- Size of symbol indicates dam capacity (relative to other dams)



With the exception of the Commonwealth Coat of Arms, the MDBA logo, and trademarks, this publication is provided under a Creative Commons Attribution 4.0 licence. (<https://creativecommons.org/licenses/by/4.0>) © Murray–Darling Basin Authority 2019

The assessment of water in storage does not include water in private storage. If the current storage volume figure is higher than the total storage capacity, this is due to surcharge levels. The total storage capacity published for the Lower Lakes (Alexandrina and Albert) is an approximate value.

* Lower Lakes storage volume is not included in southern Basin calculations. Visit mdba.gov.au/managing-water/water-storage for more information.



Australian Government

